

The background is a collage of nature scenes, including trees and a body of water, overlaid with large, semi-transparent geometric shapes in shades of yellow, orange, blue, and purple. The year '2022' is prominently displayed in the upper half.

2022

ANNUAL REPORT



**COMMUNITY
CHURCH**

AT HACKLEBURG

A Ministry of the Church of God of Prophecy



All rights reserved.

Copyright © 2022 by Community Church at Hackleburg

Church of God of Prophecy

2022 Annual Report

All Rights Reserved Printed in the United States of America

TABLE OF CONTENTS

Opening	1
Letter from the Pastor	2
Impact Snapshot	3
2021 Financial Snapshot	4
2021 Projects and Maintenance	5
Outside Financial Impact	5
VISION: Connect	6
VISION: Grow	7
VISION: Serve	8
Making an Impact	9
Impacting Our Community	9
Impacting Our Region	10
Impacting Our World	11
Impact 2022	12
Impacting our Community	12
Impacting our Region	13
Impacting our World	13
Student Ministries	14
Refuge Youth	14
Refuge 2022	16
Community Kids	17
Launching Awana's	18
Super Cool Sunday	18
Pastor's Notes	21
2021 Financials	23
2022 Budget	24
2022 Wish List	25

Opening

This is now our fourth year to present an Annual Report with our church family in detail. Our church leadership has a commitment to share the state of our church with full transparency. The state of our church is far more than an end-of-year financial statement, but it must also include the ministry and the activity that facilitates our mission. While this report cannot contain all, it does serve as a highlight of where we have been and where we sense God leading us.

Let us celebrate what God has done in our church family in 2021 and begin to anticipate with joy what God is leading us into for 2022.

CHURCH LEADERSHIP

Pastoral Staff

Lead Pastor: Joshua K. Lynn
Youth Pastor: Brandon Benson
Associate Pastor: Zack Isom
Worship Pastors: Brandon Benson
and Bailey Stidham

Men

Daryl Weatherly

Women

Lisa Stidham

Outreach/Hands and Feet

Daniel Green

Church Ministry Team

**Joey Stults, Denise Spencer, Josh
Weatherly, Tina Raper, Daniel
Green, Cynthia Stidham, Tabitha
Bragwell**

Deacons/Deaconess

**Joey Stults
Ronnie Stidham
Greg Stidham
Josh Weatherly
Charles Stidham
Jean Stults
Mark Sutton**

Finance Committee/ Board of Directors

**Joey Stults-Chairman
Josh Weatherly
Ronnie Stidham
Greg Stidham
Charles Stidham
Girlye Ray McCarley
Lynn Raper
Brent Fincher
Susan Potter
Joshua Lynn**

Letter from the Pastor

2021 was a year in which, individually and as a church, we began to find a new rhythm and find a new normal life and ministry. Reality set in that we would not return to life as it was in 2019. We have been challenged to find what the Lord had for us moving forward. As usual, there were certain things that could have been done differently in hindsight, however I am extremely grateful to the Lord and for you, as you continued to serve and find ways to make a positive Impact through all the changes. Thank you for serving by stepping into many areas of ministry you had never served. Lastly, thank you for your faithful tithing which is the bedrock of our giving and our ministry funding.

As we started last year, 2021, we were unsure of what this new year would be like as we struggled locally with COVID-19. We had questions such as, "Will we ever return to the 'old' normal? What would the future hold? What can do we do in the now and present at times?" These questions sometimes felt overwhelming. Just as we were ready to take new steps forward, we would have to pause or adjust to fit the current dynamics in our community and church family time and time again. As we closed out 2021, it became clear that the experts had been right regarding the new realities of churches in America. In spite of pauses, setbacks, and constant evaluation of how to do 'church' in this new normal, we saw God do some great things in 2021. We continued to push forward in our mission and our call to Impact our community, region, and world. Several ministries took giant leaps in the church and beyond the walls in following the leading of the Holy Spirit. The greatest challenge was (and still is) our greatest opportunity - how do we learn and take advantage of the changing world to make a greater Impact for Christ and His Kingdom?

My Spirit continues to be led that we would be positioned to Impact the culture in a greater way amidst the changes in our world. The needs of people are fundamentally the same today as they always have been, and so is our mission. However, with all the uncertainty and instability in the world today, the need for our mission to be accomplished is even greater. If there has ever been a time that we need to Connect in relationship with Christ and other believers, to heed the call of the Spirit to Grow deeper, and Serve so that we truly Impact others with the Love of Jesus it is NOW. Heaven depends on it, lives hang in the balance.

Pastor Joshua Lynn

Impact Snapshot

Weekend Worship Averages:

1st Quarter: 92
2nd Quarter: 106
3rd Quarter: 98
4th Quarter: 101

2021 Average: 99
(75% of 2019- Pre-Covid)

Special Weekends:

Easter: 190
Super Cool Sunday: 140

Website and Other Media:

51,103 Website Visits
7,599 Website Visitors

Facebook Live:

55,541 Minutes Viewed
18,245 3+ Second Views
3,307 1 Minute Views
265 Live Video Follows

Total Service Streaming:

503 Total Views
136 Unique Viewers
1 hr. Average Time per View
186 Hr. 38 Min. Total Time Watched
32 States and 45 Countries

Facebook Impact:

2,051 Followers (+297)
Total Page Likes: 1,936 (+268)

COVID Assistance:

\$914.00

Salvations:

6 Weekend Commitments
6 Reported Salvations
2 Baptisms

Membership:

2021 Total: 178
3 New Members

Lead Pastor's Report

Sermons: 51
Salvations: 6

2021 Financial Snapshot

GIVING (Offering)

Tithes:	\$288,037.71
General Expenses:	\$7,313.83
Project Fund:	\$4,170.10
Hands and Feet (Outreach):	\$2,925.00
World Missions (DR Church):	\$22,685.10
PPE Income:	\$27,418.62
Other Offerings:	\$11,899.97
TOTAL GIVING:	\$363,740.33

EXPENSES

General Operating Expenses:	\$67,710.74
Hands and Feet (Outreach):	\$11,309.08
World Missions (DR Church):	\$26,412.10
Project Fund:	\$11,853.22
Fall Festival:	\$1,086.21
Youth Ministry:	\$5,779.27
Children's Ministry:	\$5,136.09
Ladies Ministry/Conference:	\$2,833.53
Youth Camp Boothe:	\$5,475.00
TOTAL EXPENSES:	\$317,543.99

NOTE: A Profit and Loss Statement at the conclusion of the report and further details upon request from the treasure.

2021 Projects and Maintenance

Seed Fund

Bus Camera:

Two Cameras that record
\$1,964.88

Upgrade Thermostats:

Smart Wifi access
\$2,266.80

Fellowship Hall A/C:

\$4,000

Ice Machine:

\$1,299

Impact Mission Wall:

\$282.30

New Wireless Mic:

\$669.60

Outside Financial Impact

Beyond Our Church

Community/Region:

Hands & Feet:	\$8,681.00
Place of Grace:	\$270.00
AL State Campgrounds:	\$7,475.00
CHOW:	\$2,628.46

World:

Dominican Republic:	\$26,412.10
Uganda Orphanage:	\$1,386.00
COGOP International Support:	\$31,607.85

\$78,460.41

**24.7% of
ALL
Finances
Sent Out.**

VISION: Connect



CONNECT TO CHRIST

Our greatest desire continues to see everyone **CONNECT** to know Christ in a personal relationship. Through Groups we build relationships with Christ and other believers while doing life together.

In 2021 our Groups were limited and done through traditional 'auxiliary' groups such as women, men, youth, children, and in larger events and holidays. Finding ways to connect in our new reality while meeting the needs of our local culture shifted from the beginning of the year to the end of the year. By the end of the year, some sense of a new normal had set in and allowed us to look into 2022 with a renewed hope.

Moving Forward to **CONNECT** in 2022

- Use Connect Groups For People To Easily Connect Using Short Term Interest Based Activity.
- Add In Additional Times And Groups To Build Community
- Establish Long-Term Groups In Order To Stay Connected And Produce Community
- Create Blocks Of Time For Whole Family Groups
- See Everyone Who Calls Our Church Home Connected In A Group

As discussed in 2021, people found themselves locked away and feeling more alone and isolated than ever before. God created us to be relational with Him and others. One of our greatest needs in 2022 is to commit and invest in one another in order to build one another up outside of our worship service. To do so, we must be committed to gather more often and with more intentionality.

VISION: Grow



GROW STRONG IN CHRIST

We have known and believed as a church family that we need to GROW strong and mature in Christ. In 2021 the Spirit called us to GROW deeper than ever before in order to be ready for the times ahead and to fulfill our purpose. We continue to believe that the GROWth Journey series and GROW classes provide the best opportunities to GROW strong and mature in Christ and with one another.

As a result of the COVID pandemic, in 2021, we were limited to offer in person Growth Journey and many times we did not do mid-week Grow classes. In our Children's ministry, we added a new ministry that is focused on Growing through the Word by using the Awana's Program. This has been a great advancement to Grow our children.

Growth Journey: Connect

Times Offered: 1

Number Attending: 5

New Members: 3

Moving Forward to GROW in 2022

Growth Journey

- Growth Journey: Connect (Step 1) Each Semester
- Growth Journey: Grow And Serve- 2 Or More Times
- Sunday And/Or Wednesday



Grow Online:

- Evangelism; End Times; Gifts, Etc.
- Grow Wednesday

In 2022, we believe that we can restore quarterly offerings of the GROWth Journey on Sunday afternoons and Wednesday evenings. We will also be able to add Wednesday night classes as options.

VISION: Serve



SERVE OTHERS AS UNTO CHRIST

We passionately believe that we are not complete in Christ until we release the unique abilities and gifts that we have been given in order to **SERVE** others so that we can make an **IMPACT** in our Community, Region, and World. Each person has a place to serve through the Impact Teams in and out of the church with their gifts, talents, and purpose.

Our church family has always had a heart to **SERVE**. In 2021, we were able to Serve in-person again. Some of our service opportunities were traditional, while some were new, such as Awana Club. There is no way we can make an Impact for Christ without many people willing to SERVE in weekly ministries starting on campus. Thank you for committing and sacrificing for the sake of Christ by serving your church family and ultimately, Christ.

Impact Teams: 10

Sunday Teams: 8

Non Church Service Teams: 2

Moving Forward to SERVE in 2022

2022 Impact Team Future

- Complete The Realignment Of Teams Under 7 Core Areas
- Take The Next Step In Pastor Gatherings/First Steps
 - Gifts Aligned With Passions And The Vision
- Offer More Training For Impact Teams

As we look into 2022, we know that the lesson of flexibility must continue to guide us. We need to increase the size of our teams serving on Sunday in order to serve our church family and guests even better. We must also continue to be open to change to give our best through our gifts and passions.

Making an Impact

Our mission is greater than a single ministry, team, or event. Jesus gave a simple and clear mandate in Acts 1:8 to be 'witnesses' in their community, their region, and to the world. Every team and ministry has a part in our call to reach beyond our doors.

In 2021, we were able to restore some of our activities and events that we could not do in 2020. We must continue to be adaptable in finding ways to make an Impact in a continually changing world. As we look to 2022, we have great hopes to strengthen many of our annual outreaches, add a church-wide Serve Day, and continue to find ways to Impact in smaller group settings.

Impacting Our Community

Local Missions: Hands and Feet

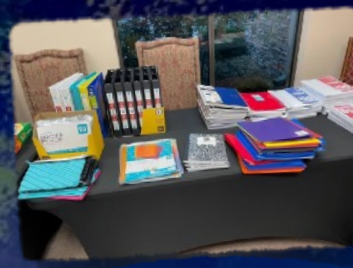
Assistance of Families: \$2412
CHOW Bags and Meals: \$2,628
Church Families: \$655
Christmas Gifts/Food: \$1,682
Other Assistance: \$3932

Christmas Outreach:

50 Pairs of Shoes for Kids
Food \$1,000 for food for families in need

Christmas Outreach Seniors:

Christmas Caroling
Special Christmas Snacks



Back to School Outreach:

- Backpacks and Supplies



CHOW Bag Ministry

CHOW Bags:

20 Kids per Week (2020-2021 School Year)

31 Kids. per week (2021-2022 School Year)

**Cutting Hunger on Weekends (CHOW) Bags are meals and snacks that provide students in need meals in baas every weekend durina school.*



Impacting Our Region

Regional Ladies Conference



Over 100 Ladies
Attended



Place of Grace

Place of Grace

- Announced and signed a letter of intent to support the Place of Grace
- To build a building on campus to house the 1st Phase



the
Place of Grace
helping one soul at a time



Impacting Our World

Dominican Republic

Dominican Republic

Church Roof Project Given Phase **COMPLETED**

- \$26,412.10 Given to the church for needs, ministry and building
- Finished funding for the concrete roof to be poured
- Closing in the entire building (work completed)



Impact 2022

Impacting our Community

Continue and Enhance

- CHOW Bags and Ministry to their Families
- Individual Needs of Church Family and Community
- Back to School Backpack Project 2022



2022 Deeper Impact

- Start Back Community Impacts 2022
- Church-Wide Serve Day
- Groups Continue "You Are Loved" Outreach



Impacting our Region

Jail Ministry Restart:

- Begin to Stream Sunday Service Weekly (pending approval)
- Return to weekly group meetings

Place of Grace

- Build Phase 1 of Building.
- Start taking in ladies by year end.
- Church ladies partner in discipleship.

the
Place of Grace
helping one soul at a time

Impacting our World

Dominican Republic Church Building

- Take a Mission Trip
- Continue to Support the building completion



Student Ministries

2021 was another year with a lot of change, from our continued adjustments with COVID, to seeing our pastoral leadership in student ministries change. However, our youth began to find a new normal and reconnect in some great ways. As well our children's ministries took some great steps forward and started a new ministry that will impact the future of our church.

Youth Ministry Spotlight:

Mid-Week Average: 23.5*

Known Salvations: 4

Monthly Unique Attenders: 40 (+2)

**For the Months we could record on campus*



Refuge Youth

In 2021, we saw some great things but we also saw a transition as Pastor David Ray and his family moved on to other things during the summer. We are thankful for the ministry of Pastor David during his years in the Refuge. He truly loved our youth and served them well. The last half of the year Pastor Josh led the Refuge with the Youth Leadership Team. We are extremely thankful for their commitment to serve and dedication to lead our youth.

In the midst of the activities, we were blessed with some great ministry. A host of volunteers and special guest filled the pulpit on Wednesday nights. Some were in house and others were missionaries. Through a powerful presentation of the Gospel on night with a guest minister, four youth came up to give their life to Christ.



We are thankful to God for this great season and very thankful to our team of volunteers that are essential to our Refuge ministries.



Camp Booth-Summer Youth Camp 2021



Refuge 2022

The Vision of the Refuge is to:

create a healthy environment where students can come and connect with one another and learn to fall in love with God and His Word. Cultivate a place where students grow in their faith and then are led to serve their community, their church, and ultimately God's kingdom.

Youth Ministry Goals:

- Youth Worship Team
- Raising student volunteers to become leaders
- Local Mission Trip
- Student Leadership Team

Community Kids

Our Kids Ministries, like other ministries, had challenges with limited in person meetings in 2020, but 2021 allowed us to return to most of our weekend services. We continued to have our Sprouts kids join the big kids in KTM on Sunday mornings. We also continued to have our Kids stay in the main service during worship. It has been a great blessing to have our kids in worship with us. We have seen kids come to the altar and worshipping with others in this time.

Highlights:

Sunday AM: 15 Average

Wed. Night: 17 Average

Fall Launch of Awana

We are so thankful for our Kids Treehouse Ministry team lead by Sister Tina Raper. They serve as a team units and each team serves for one month at a time. In 2021, we had three teams. Each team would minister to the kids for an entire month, and then rotate to be in the main sanctuary. This has allowed our kids time to get to know their teachers and those serving them.

No doubt this year has been difficult for our kids and we continue to evaluate how we can best minister to them. However, I have said it before and the same holds true today that children are resilient and they often adapt much easier than some of us. I have been extremely proud of how they have handled these changes. Their ability to make the best of every situation is inspiring and something that we can all learn from.



Launching Awana's



One of the greatest needs in all of our ministries was the need to revitalize mid-week kids' ministries. We did not want to simply fill time with an activity but we wanted to be intentional into what God was calling us. We launched this endeavor which required more time, more money, and more commitment of our Impact Teams. We did this by launching Awanas. Awana's is a Bible memory club that contains large group lessons, game time, and small group time to work on memory verses. The kids earn prizes, points, patches and badges.

At the end of 2021, our kids were able to spend their points as Community Bucks to buy gifts for their family at our Kid's Christmas Bazaar. During this, they loved on others while seeing their hard work paying off.



Super Cool Sunday



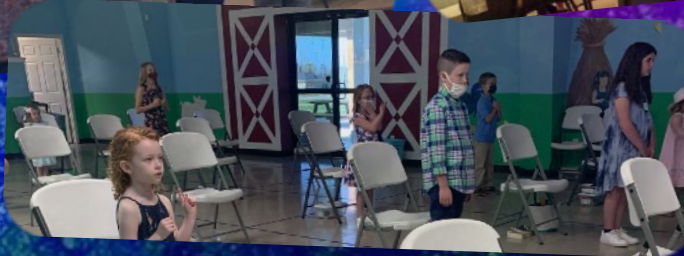
Fall Festival

Our theme for the 2021 Fall Festival was "Around the World." With the rainy weather, we were forced to move inside, but our team made the most of it. This provided many people a chance to come into our building for the first time. Our decorated tables started at the front door and went all the way through the gym with stops along many 'countries' and games. This format actually allowed our 'trunks' (set up at tables) to have fun and fellowship through the day, too.

Fall Festival:
Over 200



Easter 2021



Pastor's Notes

2021

- Stepped out in Faith With the Place of Grace
- Outreach Through "You Are Loved" Group Efforts
- Kicked Off Awana's Bible Memory Clubs for our Kids
- Big Events: Spring Revival, Ladies Conference, Fall Festival, Super Cool Sunday and More
- Pastoral Staff Changes
- Greatly Blessed in Giving To Support Ministry in 2022



2022

Deeper and Fruitful:

After many challenges through COVID and cultural changes, we approach 2022 hopeful and faith-filled. We must continue to adjust our methods and structure if we want to see God continue to impact lives and make our ministries even more fruitful in the future. In 2021, the Lord guided me to grasp our need to adapt to the changing culture, and overcome our own personal challenges as we embrace Him during these times.

We must align our hopes and vision with action steps of individual commitment and pursuing spiritual maturity. What was once near accidental must become intentional and constant to ensure people do not fall through the cracks.

The vision continues to cry out for groups to go deeper into a sense of community. Our call to help people find their gifts and passions will be essential for us to go deeper and be fruitful. A broader group of leaders will be a part of defining how we will take full action and which methods we will utilize. There is also a call from the Spirit for people to rise to become spiritual fathers and mothers. To be healthy, we need a deeper sense of service to be able to serve the weekly needs of the church. At the end of the day, these must be more than simply tasks, but a deep commitment to the mission.

In 2021, God spoke to me the verse *"For everyone to whom much is given, from him much will be required."* (Luke 12:48b) God has blessed us, we must go deeper.

C-Groups:

Community Groups:

- Healthy and Strong- Longer Term
- Locational, Relational, Purposeful
- Groups that Impact
- Prayer, Support, Serve/Love Others

Connect Groups:

- Short Term, Interest based activities
- Easy entry with low commitment

Spiritual Fathers and Mothers:

"A call to have the 'older teach the younger'

Empowering Gifts & Passions:

7 Core Ministry Teams
Pastor Gatherings/First Steps
Church Ministry Team

Gatherings:

Re-establish Fellowships
- Sunday Dinners
- Sunday PM fellowship
Monthly Revival PM Service

2021 Financials

INCOME

Camp Boothe Offering	\$810.00
Children's Ministry Offering	\$553.00
Evangelist Offerings	\$1,167.00
5th Sunday Youth Pastor Offering	\$101.00
First Sunday Pastor's Offering	\$3,092.50
General Fund/Expense	\$7,313.83
Hands and Feet Missions	\$2,925.00
Ladies Ministries	\$1,230.00
World Missions	\$22,685.10
Uganda Missions	\$4,170.10
Project and Maintenance	\$4,170.10
Youth Ministries	\$25.00
Special Causes Offering In/Out	\$425.00
**PPE Loan Income	\$27,418.62
Other Income	\$2,398.47
Tithes	\$288,037.71

MINISTRY EXPENSES

Hands and Feet	\$11,309.08
Children's Ministry	\$5,136.09
Evangelist Expense	\$1,800.89
Fall Festival	\$1,086.21
World Missions	\$26,412.10
Uganda Orphanage	\$1,386.00
Youth Ministry	\$5,779.27
Leadership Development	\$116.00
Youth Camp Tuition	\$3,475.00
Place of Grace	\$270.00
Ladies Ministry/Conf.	\$2,833.53

SUPPORTING EXPENSES

Special Dates/Occ.	\$912.50
Funeral Expenses	\$778.13
Christmas Banquet	\$1,425.70
Camp Boothe	\$7,601.56
Project and Maintenance	\$11,853.22
General Expense	\$67,710.74
Tithes on Tithes (International)	\$31,607.85
Expense out of Tithes	\$10,369.45
Payroll Expenses	\$122,808.46

TOTAL INCOME

\$363,740.33

TOTAL EXPENSES

\$317,504.73

NET INCOME

\$46,235.60

Total Liabilities*

\$496.99

ASSETS (Checking)

\$144,650.89

**The only liabilities are those for payroll expenses which are withheld and paid at designated periods.*

***THE PPE loan from 2021 was forgiven in 2022 and showing as income per accounting guidelines.*

Additional Reports and details can be requested from the church treasurer.

2022 Budget

INCOME

General Income	\$7,313.83
Tithes	\$288,037.71
TOTAL INCOME	\$295,351.54

MINISTRY EXPENSES

Hands and Feet	\$13,000
Children's Ministry	\$4,500
Couples Ministry	\$1,000
Evangelist Expense	\$1,000
Fall Festival	\$1,600
Ladies Ministry	\$2,250
Men's Ministry	\$1,000
Missions/Harvest Partner	\$3,600
Youth Ministry	\$6,500
College/Career	\$1,000
Small Groups	\$900

SUPPORTING EXPENSES

Leadership Development	\$1,000
Special Dates/Occ.	\$1,500
Funeral Expenses	\$750
Christmas Banquet/ Deco	\$1,500
Camp Boothe	\$4,500
Assembly Expense	\$1,000
General Expense	\$68,125
Payroll Expenses	\$155,672.01

2022 Wish List

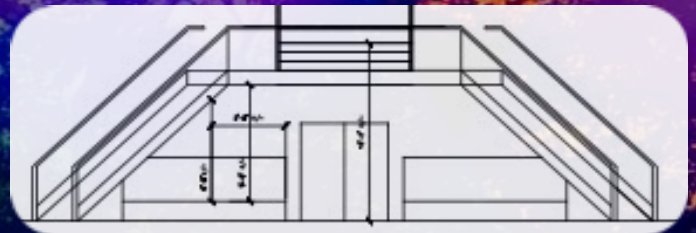
Going Beyond our Budget

Below, you will find several projects we hope to complete in 2022. These are some approved projects for giving above and beyond regular giving of tithes and offerings. Some are in exploration phase and some (like the Refuge) that are in progress. Your giving to the Project Fund helps us make these wish lists a reality.

Possible Stairway Inside Sanctuary:

Giving access to the balcony
and lower glass for visibility

- Rough Estimate \$50,000



Pavilion (Phase 3):

- Lights and Ceiling Fan
- Rock fireplace and corner post

Refuge Youth Update:

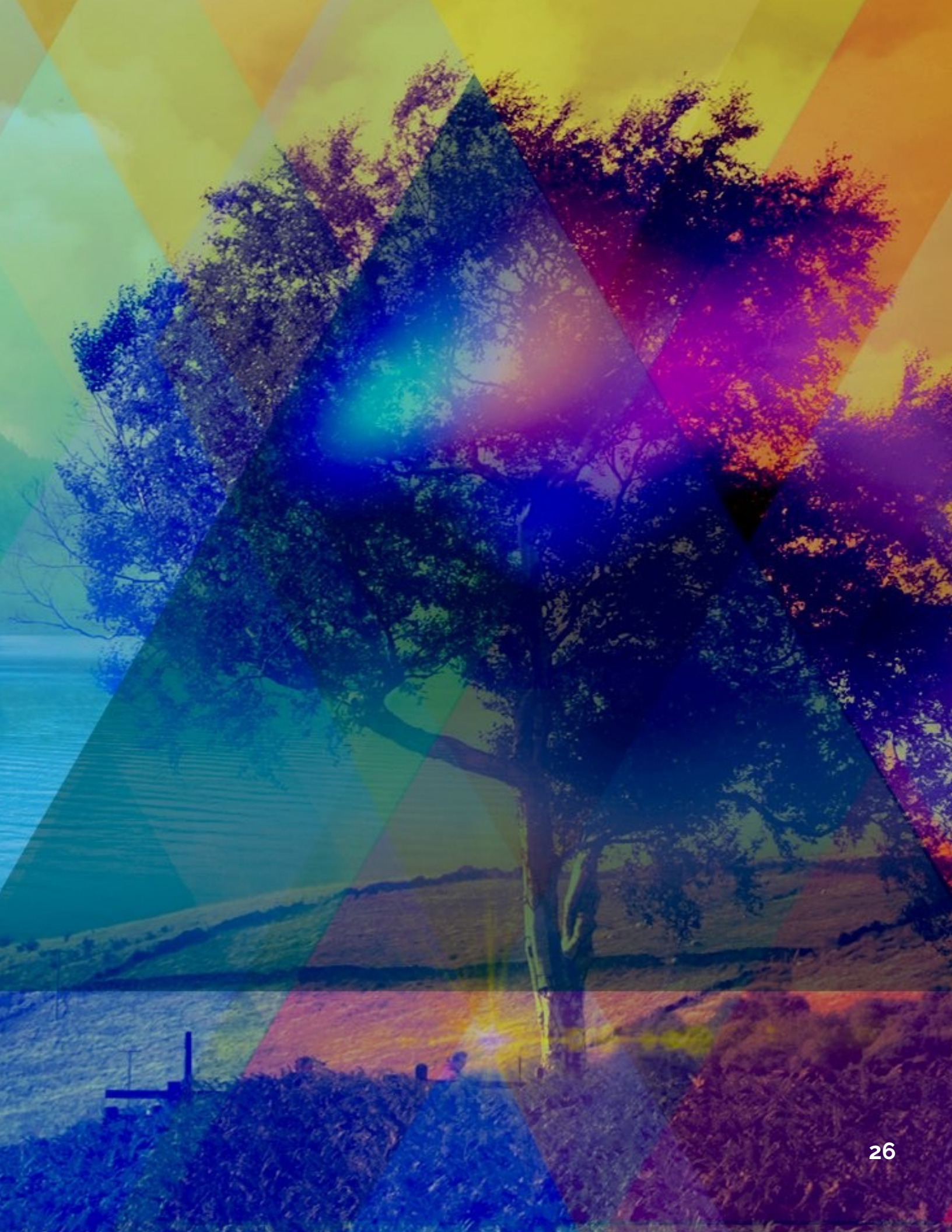
\$2,500- \$3,500

- Tables and chairs. \$1,000
- Couches- \$1,400
- Snack bar - \$500



Media and Sound Updates:

- Improve the sound both live and online.
- Add in-ear monitors for vocalist.





OurCC.org

